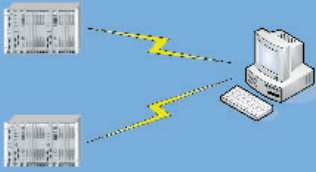


Industrial Communication

Support for SmartNetworks
by AIS Brno



Optical Converter OPTEL



- Conversion of RS232 to fiber optic
- Full duplex operation
- Wave length 820nm for optical cables multimode – 62,5/125µm
- Transmission rate 1200 to 115 200 bps
- Adjustable transmitter power
- Invertible optical signal
- ST optical and DB9/M RS232 connectors
- DTE/DCE data mode
- Power supply 20-60 V AC/DC or 80-230 V AC/DC
- Operating temperature 0 to 50°C
- Installation on DIN rail 35mm
- Mounting dimensions 65 x 89 x 53 mm

FSK Modem MRS32



- Data transfer via telephone channel by modulated voice frequencies
- RS232 data interface with RTS/CTS control
- Full duplex or half duplex operation
- Transmission rate 75 to 1200 bps
- FSK (frequency shift keyed) modulation
- Galvanic separation of line by line transformers
- 2-wire or 4-wire connection
- Adjustable output signal level
- 19 operation modes
- Power supply 12 V DC, 5 V DC or 24 V DC, another power supply voltages on request
- Installation on DIN rail 35mm

Communication Converter iTEL



- Conversion of serial communication to TCP/UDP protocol server/client
- Tunneling of serial communication over Ethernet
- Communication interfaces RS232/Ethernet
- RS232 transmission rate 300 to 115 200 bps
- No need of driver on the PC side
- Embedded WEB server and TELNET server for on-line parameterization
- Fixed IP address
- Power supply 24 V DC
- Installation on DIN rail 35mm
- Mounting dimensions 90 x 36 x 59 mm

Communication Gateway KOTEL



- Programmable communication gateway for concentration and/or conversion of communication protocols
- 4 serial channels or 3 serial channels and GSM modem channel, 1 serial service port
- Ethernet channel 10 Mbps
- Embedded WEB server for on-line parameterization
- Remote update of firmware
- User-oriented solutions
- Power supply 18-36 V DC
- Operating temperature 0 to 50°C
- Installation in 19" rack (DIN rail 35mm version also available)

Communication Gateway HATEL



- Programmable communication gateway for conversion of communication protocols
- 2 serial channels, 1 serial service port
- Ethernet channel 10/100 Mbps
- External configuration SW
- Download of firmware and parameters via Ethernet port
- User-oriented solutions
- Power supply 20-30 V DC (110-220 V AC/DC version also available)
- Operating temperature 0 to 50°C
- Installation on DIN rail 35mm or wall mount

Phasor Measurement Unit FOTEL



- Measurement of voltage and current synchrophasors
- Modular construction with configuration up to 24 inputs
- Direct connection to voltage instrument transformers
- Input voltage range 45 to 120 V_{ef}
- Voltage rating input to output 2.5 kV_{ef}
- RS232 communication interface
- Communication speed 1200 to 19200 bps
- High precision GPS time synchronization
- Power supply 24-60 V AC/DC
- Output voltages for power supply of external devices
- Installation on DIN rail 35mm

Time Synchronization Unit SYTEL



- Time synchronization of external devices
- 2 open collector outputs
- Independent parameterization of period and length of output pulses
- Precision of pulse leading edge better than 5µs
- RS232 service port
- High precision GPS time synchronization
- Power supply 24-60 V AC/DC
- Installation on DIN rail 35mm

Multiplexer FOTEL MPX/L



- Multiplexer of serial communication lines
- Up to three RS232 multiplexed lines
- Possible cascading via RS422 interface
- Transfer rate 9600 bps and higher, lower baud rates on request
- Cannon DB9/F interface connectors
- Power supply 18-75 V DC, 15-50 V AC
- Installation on DIN rail 35mm
- Mounting dimensions 90 × 58 × 158 mm

Phasor Measurement Unit METEL

- Terminal (programmable microcomputer) for synchronous measurements
- Data logger with fast parallel measurements — typically 10 kHz
- Various measurement inputs for range of instrument transformers — 8 or 16 analog inputs per unit
- High precision GPS time synchronization
- Wide range of communication options on physical layer (2 × Ethernet, 1 × RS232, 1 × GSM/GPRS) and standard protocols (e.g. IEC-68570-5-101/103/104, IEEE-C37.118) implemented
- FTP client for file-based data exchange
- Data buffering for support communication without loss of data
- Self-diagnostic functions – internal temperature and power supply monitoring
- Service serial port
- Embedded WEB server for local and remote parameterization
- Local and remote firmware update
- Wide range security functions for communication including IPsec
- Conforms to EMC standards for industrial environment
- Power supply 100-230 V AC/DC
- Wall mount or panel installation



AIS spol. s r.o.
Palackeho tr. 258/73
612 00 BRNO
Czech Republic

phasors@ais-brno.cz
tel.: +420-541248812
fax: +420-541248814
www.ais-brno.cz



THIS MARKETING SHEET IS FINANCED TOGETHER WITH EUROPEAN RESEARCH AND DEVELOPMENT FUND AND MINISTRY OF INDUSTRY AND TRADE OF THE CZECH REPUBLIC